

Hour Meters

UWZ, FWZ and GZ Series



Dependable Monitoring, Seamless Integration

Grässlin by Intermatic provides a rugged, reliable solution for light commercial hour meter applications. Available in surface-mount, panel-mount and DIN rail-mount configurations, UWZ, FWZ and GZ Series Hour Meters are simple to monitor, easy to install and offer lasting value in a wide range of settings.

Features and Benefits

- **Long-lasting Reliability** – Grässlin by Intermatic Hour Meters have built a reputation for long-lasting performance and dependability. Choosing a high performance solution over a lesser component can make a difference by improving equipment durability and avoiding premature failures. It also reduces maintenance issues and helps secure the resale value of expensive equipment.
- **Versatile Temperature Range** – The wide -40° F to 160° F operating temperature range found in UWZ and FWZ Series Hour Meters allows the controls to withstand intense weather conditions without issue. This makes them an ideal solution for rigorous outdoor applications, particularly in high-stress climates.
- **High Visibility Display** – Improve meter reading accuracy and speed using the vibrant, rolling digits found on Grässlin by Intermatic Hour Meters. UWZ Series solutions include a high-visibility orange tenths digit, while FWZ and GZ Series solutions offer yellow hundredths and tenths numerals.
- **Competitive Pricing** – A variety of hour meter styles allows us to provide a quality, cost-effective solution in nearly any application.
- **Flexible Mounting Options** – A variety of mounting options (e.g., panel, surface, DIN rail) and designs allow Intermatic hour meters to fit nearly any application.

Hour Meters

UWZ, FWZ and GZ Series

Counting Down to Your Next Project

Each of the three Grässlin by Intermatic hour meter categories offers a unique set of features and benefits.

Panel-mount hour meters are placed in the opening of a control panel with the face remaining visible from the outside, whereas surface-mount hour meters are commonly screwed to flat surfaces. DIN rail-mounted solutions (UWZ series) are designed to be secured to a rail or placed within a DIN rail control box.

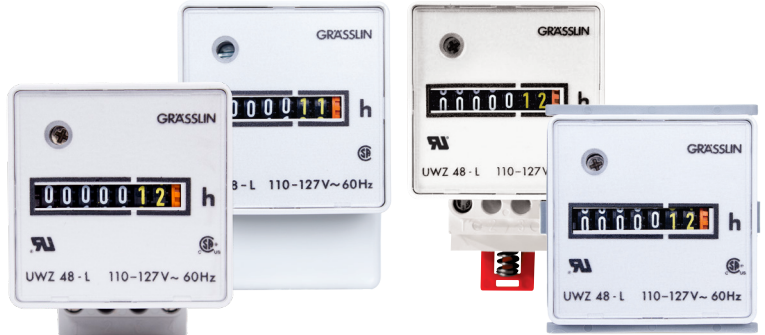
FWZ Series

- Accommodates flush- or panel-mount applications
- 24, 120, 220 or 240 VAC (depending upon model)
- Accurate at 99,999.99 (tenths and hundredths place value)
- P54 protection rating
- Non-resettable



UWZ Series

- Accommodates surface-mount, enclosed surface-mount and DIN rail-mount applications
- 24, 120 or 240 VAC (depending upon model)
- Accurate at 99,999.99 (tenths and hundredths place value)
- Ideal for electrical panel applications
- IP20 rating for Indoor applications
- Non-resettable



GZ Series

- Round flush-mount design
- Available from 8 VDC to 80 VDC (depending on model)
- Monitors activity up to 100,000 hours
- Accurate at 99,999.99 (tenths place value)
- Quartz crystal for enhanced timing accuracy
- Protection rating up to IP66
- Non-resettable

